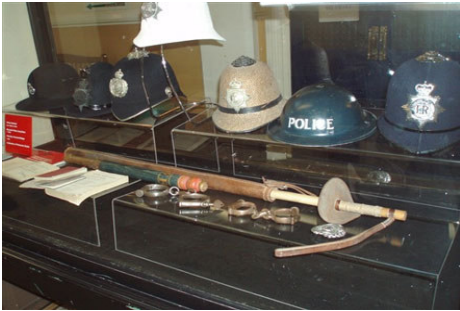


# Hidden Treasures



- **Chattri Memorial** commemorating the Indian soldiers who died in the First World War in Brighton [www.chattri.com](http://www.chattri.com)
- **The Old Police Cells Museum** is dedicated to charting the history of policing in Brighton from 1812 [www.oldpolicecellsmuseum.org](http://www.oldpolicecellsmuseum.org)
- **Undercliff Walk** East of the Marina, along the bottom of the chalk cliffs that run from the Marina to Saltdean [www.brighton-hove.gov.uk](http://www.brighton-hove.gov.uk)
- **Rottingdean** Just east of the city this was once the home of Rudyard Kipling. Be sure to visit The Grange Museum and Kipling Gardens [www.rottingdean.uk.com](http://www.rottingdean.uk.com)
- **Earthship Brighton** A solar powered, eco friendly building, built from used tyres [www.lowcarbon.co.uk](http://www.lowcarbon.co.uk)
- **Palmeira Mansions** Take a glimpse back at the opulence, taste and lifestyle of a Victorian gentleman. [www.elc-brighton.co.uk/33Palmeira](http://www.elc-brighton.co.uk/33Palmeira)
- **The Sewer Tour** Tours of the award-winning sewers run from May until September [www.southernwater.co.uk](http://www.southernwater.co.uk)
- **Theatre Royal Brighton Tour** This is your opportunity to go behind the scenes of this beautiful grade II listed theatre [www.theambassadors.com/theatreroyal](http://www.theambassadors.com/theatreroyal)
- **Old Ship Hotel** Take a tour of the oldest hotel in Brighton dating back to 1559. Hear about the Royal Escape, Smuggling and Grand Occasions [www.barcelo-hotels.co.uk](http://www.barcelo-hotels.co.uk)